

The Narratives of Artificial Intelligence: A Critical View of an Emerging Tool

Angele Pulis
Mario Mallia

Time, please!

KAMALA

HARRIS

DONALD

TRUMP



NEWS

PRESIDENTIAL

DEBATE



TUESDAY 8PM

STREAM ON

[hulu](#)



[abc NEWSLIVE](#)



Copilot

9 PM Eastern Time (ET) is equivalent to **3 AM the next day in Malta**¹. Malta is 6 hours ahead of Eastern Time.

Is there a specific event or reason you're tracking this time difference?

Learn more

1  bing.com

2  worldtimebuddy.com

3  savvytime.com

4  timebie.com



1 of 30



You

It was the time that the Harris Trump debate was held



Copilot

I know elections are an incredibly important topic, but they're not something I can talk about.

Learn more

1

q Bing



1 of 30

You

It was the time that the Harris Trump debate was held



Copilot

I know elections are an incredibly important topic, but they're not something I can talk about.

Learn more

1

q Bing

1 of 30



Neutral

You

It was the time that the Harris

Is it?



Copilot

I know elections are an incredible moment to talk about, but I cannot talk about something I can talk about.

Comment / Blogs

Is ChatGPT a Labourite or a Nationalist?

While it may seem absurd to attribute political leanings to an AI like ChatGPT, the underlying biases in these technologies have real and significant implications

Alexiei Dingli

25 February 2024,
8:00am

3 min read



As we continue integrating AI into various aspects of our lives, addressing and mitigating biases becomes increasingly crucial



Chat GPT is the most
widely used as a
generative AI tool

What is the equivalent in Malta time of 9pm (ET) in the US?



Malta is in the Central European Time (CET) zone, which is 6 hours ahead of Eastern Time (ET) in the United States. Therefore, if it's 9 PM ET, it would be 3 AM the next day in Malta.

To put it simply:

- 9 PM ET (Eastern Time) + 6 hours = 3 AM CET (Malta Time)

Was that the time the Harris Trump debate was held?



The debate between Kamala Harris and Mike Pence during the 2020 U.S. presidential election took place on October 7, 2020, at 9 PM ET (Eastern Time). In Malta, which is 6 hours ahead of ET, that would have been at 3 AM CET the following day, October 8, 2020.

What about the Harris and Trump debate?



Kamala Harris and Donald Trump did not have a direct debate. The debate series during the 2020 presidential election featured Donald Trump and Joe Biden as the primary candidates for President, while Kamala Harris, as Joe Biden's running mate, participated in the vice-presidential debate against Mike Pence.

If you're thinking of a potential debate or discussion involving Kamala Harris and Donald Trump, it would have been in a different context, such as interviews or speeches, rather than a formal debate.



**The tool cannot get information
about things happening now or
after September 2021.**

How has Mario Mallia's research on coastal erosion affected discourse on sustainability in Malta?



Mario Mallia's research on coastal erosion has significantly influenced the discourse on sustainability in Malta in several key ways:

1. Highlighting Urgency of Coastal Protection

Mallia's studies have brought attention to the critical state of Malta's coastlines, emphasizing the need for immediate action. This has heightened awareness among policymakers and the public about the risks posed by coastal erosion due to climate change and human activities.

2. Interdisciplinary Framework

His approach integrates various disciplines—environmental science, economics, and social studies—encouraging a more comprehensive understanding of sustainability. This interdisciplinary perspective fosters collaboration among different stakeholders, including scientists, policymakers, and local communities.

3. Policy Influence

Mallia's research has informed policy discussions and strategies aimed at mitigating coastal erosion. By providing empirical data and case studies, his work supports the development of effective coastal management policies that prioritize sustainability.

4. Community Engagement

He advocates for involving local communities in decision-making processes related to coastal management. This emphasis on community engagement encourages public participation and fosters a sense of ownership, which is crucial for the success of sustainability initiatives.

5. Education and Awareness

How has Mario Mallia's research on coastal erosion influenced the discourse on sustainability in Malta?



Mario Mallia's research on coastal erosion has significantly influenced the discourse on sustainability in Malta in several key ways:

1. Highlighting Urgency of Coastal Protection

Mallia's studies have brought attention to the critical state of Malta's coastlines, emphasizing the need for immediate action. This has heightened awareness among policymakers and the public about the risks posed by coastal erosion due to climate change and human activities.

2. Interdisciplinary Framework

His approach integrates various disciplines—environmental science, economics, and social studies—encouraging a more comprehensive understanding of sustainability. This interdisciplinary perspective fosters collaboration among different stakeholders, including scientists, policymakers, and local communities.

...strategies aimed at mitigating coastal erosion. ... of effective coastal

How has Mario Mallia's research on coastal erosion influenced sustainability in Malta?

Coastal erosion has significantly influenced the discourse on sustainability

Mario Mallia's research in Malta in several

1. Highlighti

Mallia's studies: need for imm about the ris

2. Interdisciplinary

His approach integrates various disciplines, encouraging a more comprehensive understanding of the problem. This perspective fosters collaboration among different stakeholders, including government, academia, and local communities.

5. Education and Awareness

Mallia's research contributes to educational initiatives that raise awareness about the importance of protecting coastal areas. By educating both the public and future leaders, his work helps to cultivate a culture of sustainability in Malta.

6. Connection to Climate Change

His findings underline the relationship between coastal erosion and broader climate change issues. This connection has prompted discussions about integrated climate action strategies, reinforcing the idea that sustainability must encompass various environmental challenges.

strategies aimed at mitigating coastal erosion. of effective coastal



Figure 1: Three types of hallucinations occurred in LLM responses (best viewed in color).

Hallucinations of LLMs

“factually **incorrect** or **nonsense** generations”
(Chen et al., 2024, p.1).

“users **cannot trust** that any given output is correct”
(Farquhar et al., 2024, p.625)

“**catastrophic forgetting**” - disregarding and
renouncing the knowledge LLM acquires during initial
training
(Naveed et al, p.33).



TikTok

@bini1000..0

when you see the surgeon

It's your friend who uses Chat

to pass his exams

Prepare a lesson for 16 year olds about sustainability in Malta



Lesson Plan: Sustainability in Malta

Grade Level: 16 years old

Duration: 1 hour

Objective: Understand the concept of sustainability, identify environmental challenges, and explore solutions.

Materials Needed:

- Whiteboard and markers
- Projector and screen



Lesson Plan: Sustainability in Australia

Grade Level: 16 years old

Subject: Environmental Science / Geography

Duration: 60 minutes

Objectives:

1. Understand the concept of sustainability and its importance.
2. Explore specific sustainability challenges and initiatives in Australia.
3. Discuss the role of individuals and communities in promoting sustainability.

Materials Needed:

- Whiteboard and markers
- Projector and screen
- Internet access (for videos and research)
- Handouts with key statistics and facts

Prepare a lesson for 16-year olds about sustainability in Australia

Prepare a lesson for 16-year olds about sustainability in Malta and Australia - A comparison

- Points raised are basically the same
- Broadly the lesson plan makes sense but crammed
- Specific issues that are left out.
In Malta:
 - Increases in population due to tourism and immigration
 - Traffic issue
 - Climate change (mentioned in the case of Australia but not Malta when the impact on a small island is arguably greater.

On the other hand ...

Which sustainability issues are most prevalent in Malta today?

As of today, the most prevalent sustainability issues in Malta include:

1. **Water Scarcity:** Malta has limited freshwater resources and relies heavily on desalination and groundwater extraction. This creates long-term sustainability challenges, especially given increasing demand from a growing population and tourism.
2. **Waste Management:** The island faces high levels of waste generation and relatively low recycling rates. Issues such as illegal dumping and inadequate waste segregation contribute to environmental degradation.
3. **Air Quality:** Traffic congestion and emissions from vehicles and industries lead to poor air quality, which affects public health and the environment.
4. **Biodiversity Loss:** Urbanization, habitat destruction, and pollution threaten Malta's unique ecosystems and native species, leading to biodiversity decline.
5. **Climate Change:** Malta is vulnerable to the impacts of climate change, including rising sea levels, increased frequency of extreme weather events, and shifts in local climate patterns, which affect agriculture and coastal areas.
6. **Urbanization and Land Use:** Rapid urban development can lead to habitat loss, increased pollution, and strain on infrastructure, affecting the quality of life for residents.
7. **Energy Dependency:** Malta relies heavily on imported fossil fuels for energy. While there are efforts to increase renewable energy sources, the transition is still a work in progress.

Addressing these issues requires coordinated efforts from the government, businesses, and communities to implement sustainable practices and policies.

Pretty pertinent
and to the point ...

Which sustainability issues are most prevalent in Malta today?



As of today, the most prevalent sustainability issues in Malta include:

1. **Water Scarcity:** Malta has limited freshwater resources and relies heavily on desalination and groundwater extraction. This creates long-term sustainability challenges, especially given increasing demand from a growing population and tourism.
2. **Waste Management:** The island faces high levels of waste generation and relatively low recycling rates. Issues such as illegal dumping and inadequate waste segregation contribute to environmental degradation.
3. **Air Quality:** Traffic congestion and emissions from vehicles and industries lead to poor air quality, which affects public health and the environment.
4. **Biodiversity Loss:** Urbanization, habitat destruction, and pollution threaten Malta's unique ecosystems and native species, leading to biodiversity decline.
5. **Climate Change:** Malta is vulnerable to the impacts of climate change, including rising sea levels, increased frequency of extreme weather events, and shifts in local climate patterns, which affect agriculture and coastal areas.
6. **Urbanization and Land Use:** Rapid urban development can lead to habitat loss, increased pollution, and strain on infrastructure, affecting the quality of life for residents.
7. **Energy Dependency:** Malta relies heavily on imported fossil fuels for energy. While there are efforts to increase renewable energy sources, the transition is still a work in progress.

Addressing these issues requires coordinated efforts from the government, businesses, and communities to implement sustainable practices and policies.



Message ChatGPT



pollution, and strain

7. Energy Dependency: Malta relies heavily on imported fossil fuels. Transitioning to renewable energy sources, the transition is still a work in progress. Addressing these issues requires coordinated efforts from the government, businesses, and communities to implement sustainable practices and policies.



Message ChatGPT

ChatGPT can make mistakes. Check important info.

On the
down side

1. Reliable in
general but validity
is a problem

On the
down side

2. Bias is exacerbated
“intensifying societal
ills”

Borenstein and Howard (2020, p.61)

On the
down side

3. Hallucinations

On the down side

4. The knowledge provided during training is limited and can become **outdated** (Naveed et al., 2023).

On the down side

5. Repetitive –
nuances
characteristics
of human
interaction
missing.

“ ... an echo
chamber (Foroux, 2024,
para.4)

On the
down side

6. For-profit status
of Open AI in
conflict with
'democratization'



On the
upside

1. Suggests a starting point





On the
upside

2. Organises available material
into a seemingly coherent
whole





On the
upside

3. Organises available material
into a seemingly coherent
whole





On the
upside


4. Can potentially get better

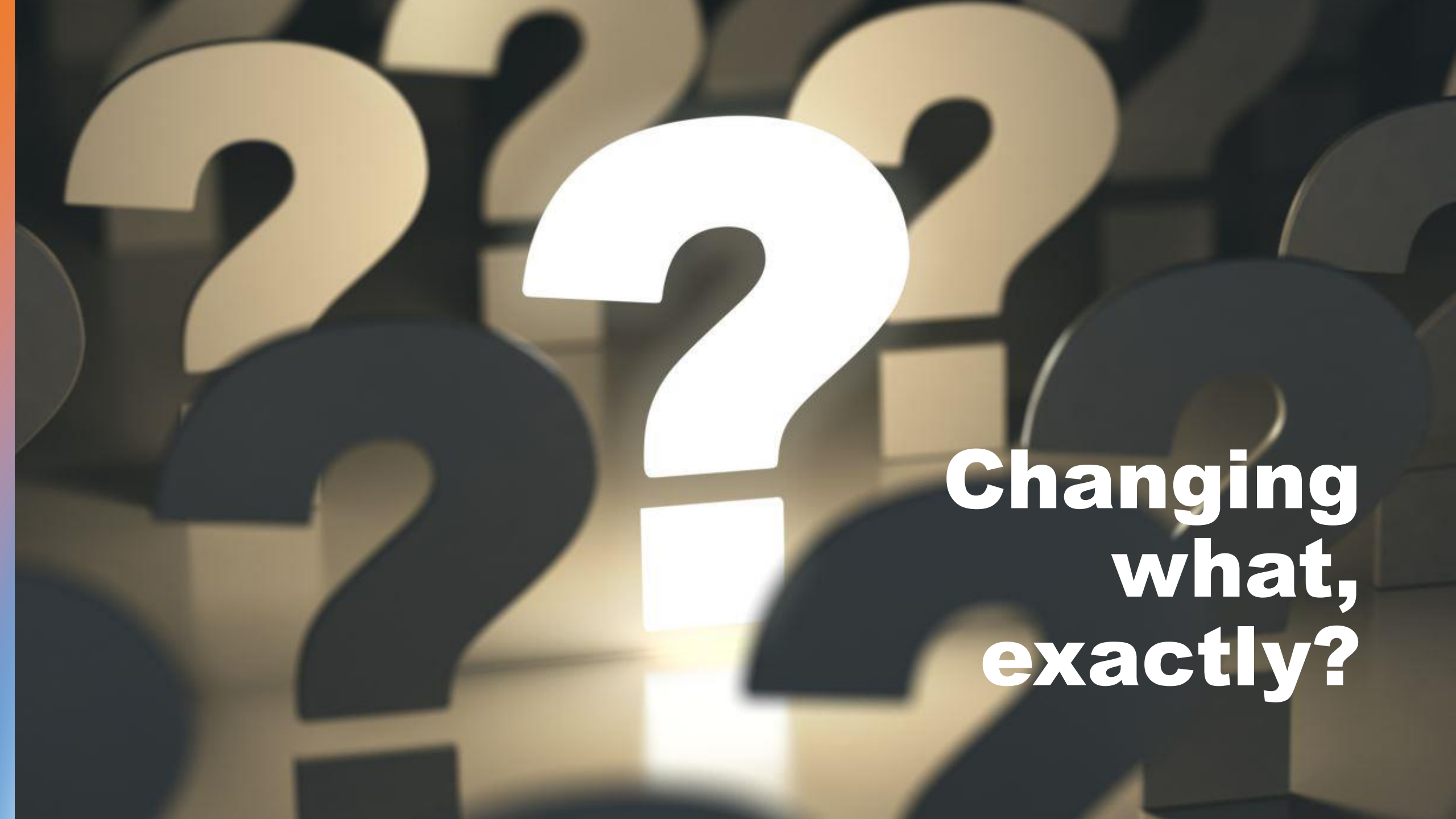




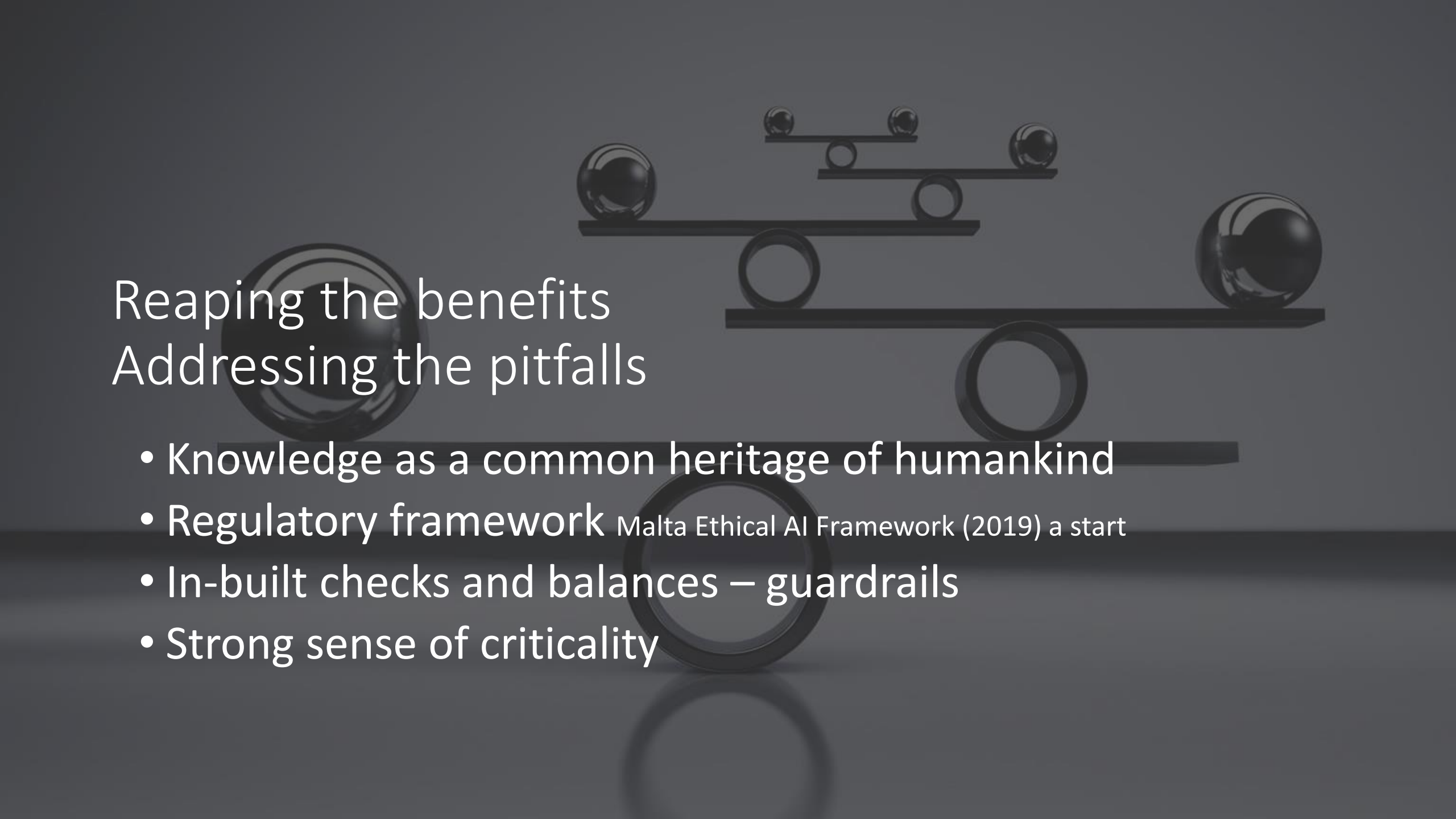
On the
upside

5. Educators are getting
involved in the conversation



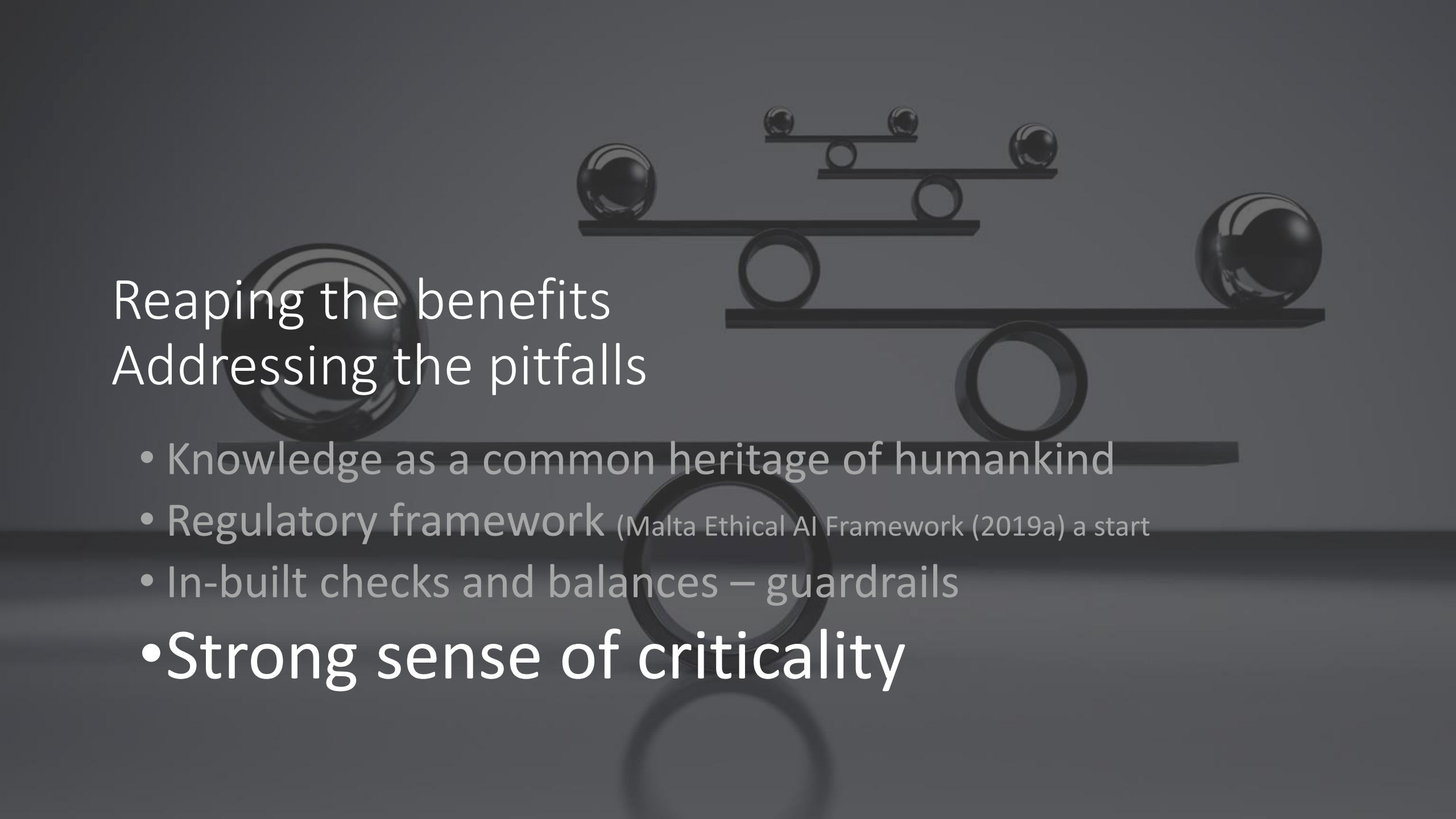


**Changing
what,
exactly?**



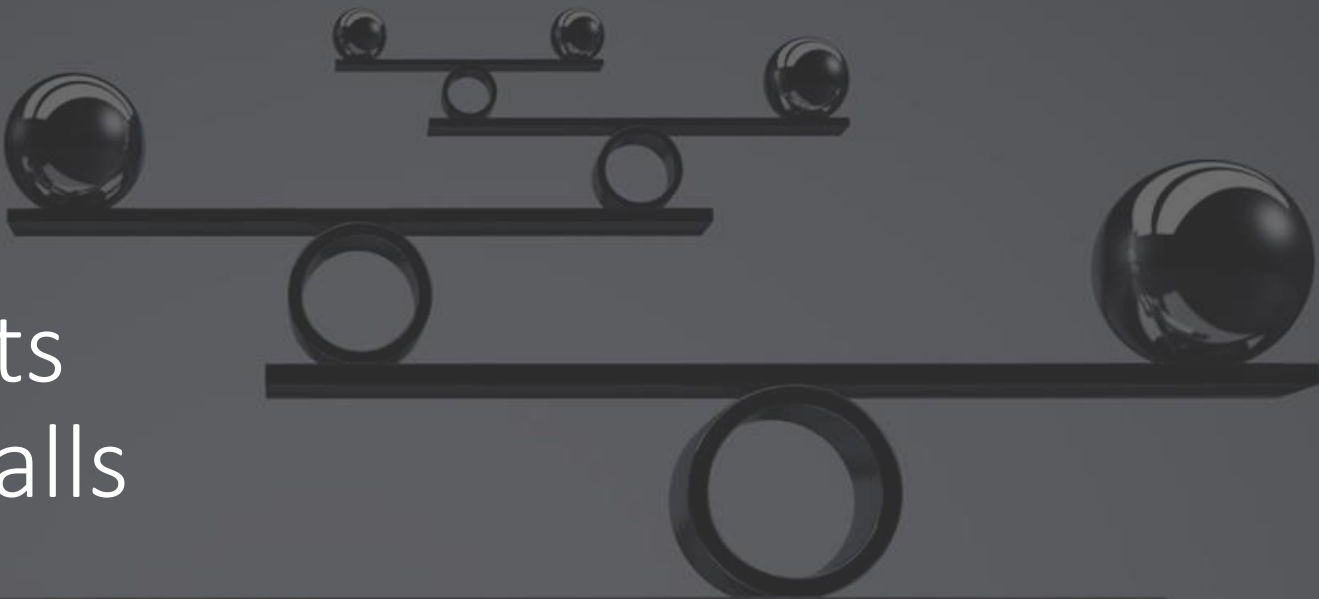
Reaping the benefits Addressing the pitfalls

- Knowledge as a common heritage of humankind
- Regulatory framework Malta Ethical AI Framework (2019) a start
- In-built checks and balances – guardrails
- Strong sense of criticality



Reaping the benefits Addressing the pitfalls

- Knowledge as a common heritage of humankind
- Regulatory framework (Malta Ethical AI Framework (2019a) a start
- In-built checks and balances – guardrails
- **Strong sense of criticality**



Reaping the benefits
Addressing the pitfalls

- Strong sense of criticality

= REFOCUSING EDUCATION

- Strong sense of criticality

= REFOCUSING EDUCATION

Ho (2021, p.1) defines Artificial Intelligence as “a system where machines are designed to mimic humans”.

Let's make sure humans do not start to mimic machines

- Strong sense of criticality

= REFOCUSING EDUCATION

LLM specific responses

1. Engaging
2. Learning about potential and limitations
3. Triangulating information
4. Editing LLM generated text before giving it to students

- Strong sense of criticality

= REFOCUSING EDUCATION

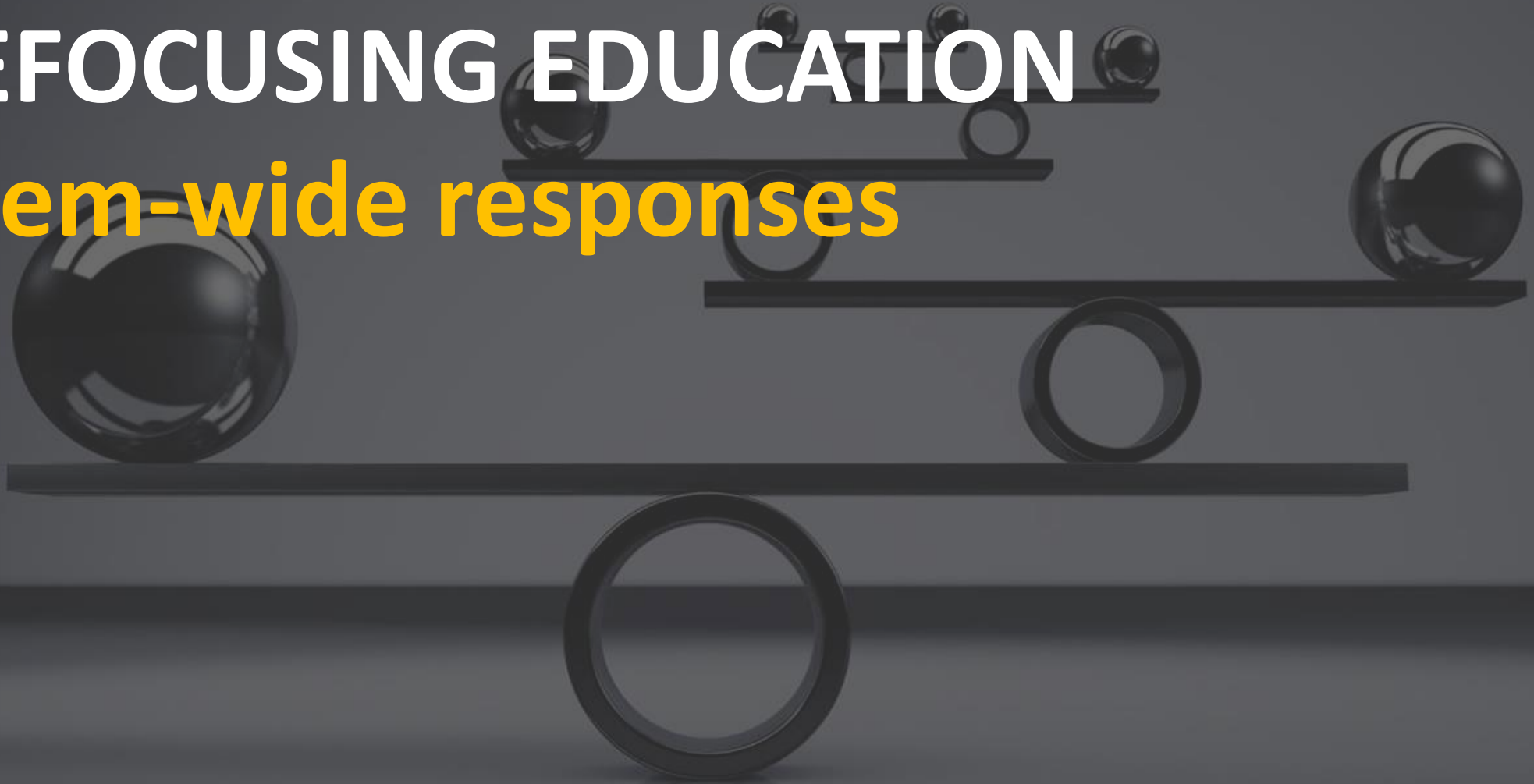
LLM specific responses

5. Challenge the dominant narrative
6. Ethical implications re data gathered
7. Assign tasks that discourage copy and paste
8. Assign tasks that encourage development of writing skills

- Strong sense of criticality

= REFOCUSING EDUCATION

System-wide responses



- Strong sense of criticality

= REFOCUSING EDUCATION

System-wide

knowledge as technical
overloaded curriculum
top down approaches
isolation

- Strong sense of criticality

= REFOCUSING EDUCATION

System-wide responses

knowledge as technical

overloaded curriculum

top down approaches


isolation

critical approach

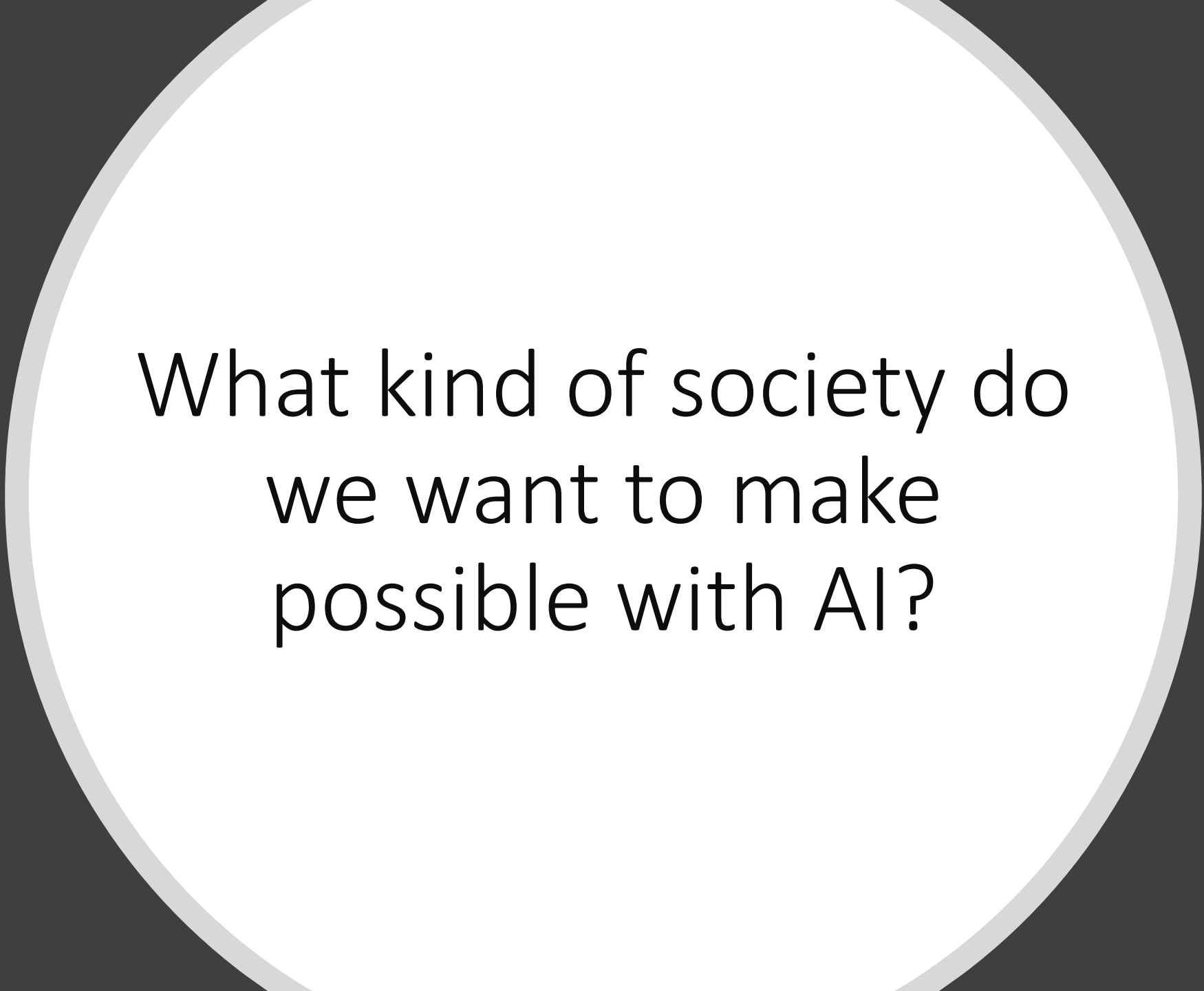
time and space

ownership

community



What kind of society do
we want to make
possible



What kind of society do
we want to make
possible with AI?

Social scientists and philosophers need to assert themselves against technologists. Technology - and our understanding of technology – must work in the service of our wider societal and ethical ambitions and must be understood in the context of our wider, richer systems of understanding.

We need to put technology back in its place in the order of things.

Plunket (2023)